



2023 Emmy Grande promotion with New Colors

We present you knitting life with EMMY GRANDE on the concept of Sohisticated.



Emmy Grande has been loved from various generations and they enjoy the knitting form wear

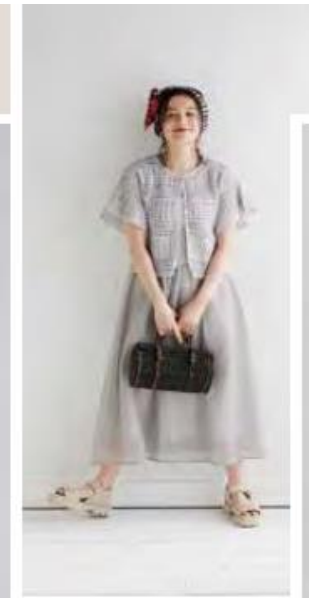
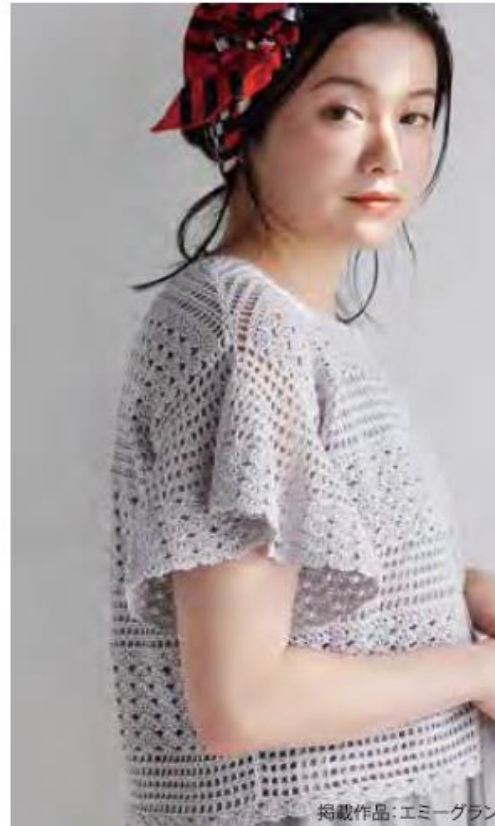


To enrich your demands, we will release new colors.

The theme is "Basic & Dull Tone"

2023 Emmy Grande

New!



掲載作品: エミーグランデで編むかわいいレース編み(本の情報は裏表紙に記載)/日本ヴォーグ社刊

NEW COLOR Sale on 4th of Apr.,2023

Basic



481 Silver White

JAN 056853

485 Light Gray

JAN 056860

811 Light Beige

JAN 056907



Dull Tone



JAN:共通コード 4971451

Sample of display



EMMY GRANDE Line-up

Emmy Grange has a long history over 50 years. We have carefully built up the qualities and color variations to suit the demand of knitters. From manufacturing to creative methods, we have been building the soul of "Emmy Grande".

EMMY GRANDE Crochet Yarn

● Cotton 100% ● Needle(JPN) Lace:0~Crochet: 2/0 ● Min. Order Q'ty: 1 box=balls ★ available both 100g and 50g ball



NEW



50g Ball (64 colors)

● 1 Ball = approx.218m

100g Ball (8 colors)

● 1 Ball = approx.436m



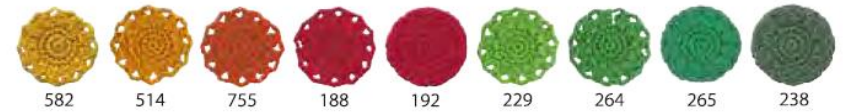
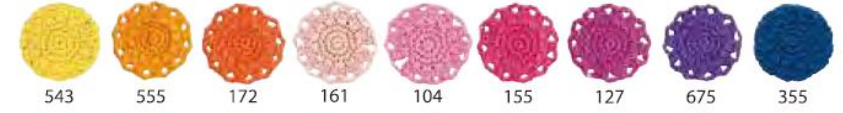
EMMY GRANDE (Colors) Crochet Yarn

● Cotton 100% ● Needle(JPN) Lace:0~Crochet: 2/0 ● Min. Order Q'ty: 1 box=3



10g Ball (35 colors)

● 1 Ball = approx.44m



EMMY GRANDE (Herbs) Crochet Yarn

● 1 Ball=approx. 88m ● Cotton 100% ● Needle(JPN) Lace:0~Crochet: 2/0

● Min. Order Q'ty: 1 box=3 balls



20g Ball (18 colors)



■ EMMY GRANDE (Baby)

- 1 Ball=approx. 110m ● Cotton 100%
- Needle(JPN) Lace:0~Crochet: 2/0

Specially designed for babies with cute DOT print with the same qualities of Emmy Grande.



■ EMMY GRANDE (Colorful)

- 1 Ball=approx. 110m ● Cotton 100%
- Needle(JPN) Lace:0~Crochet: 2/0
- Min. Order Q'ty: 1 box=3 balls

This yarns are desined with step dyeing and colorful colors. The most attractive point is the gradation. You can find any wonderful gradation through your knitting.



■ EMMY GRANDE (HOUSE)

- 1 Ball=approx. 74m ● Cotton 100%
- Needle(JPN) Crochet: 3/0~4/0
- Min. Order Q'ty: 1 box=3 balls

Thicker version of EMMY GRANDE. The quality is the same as our ploud EMMY GRANDE, even for beginners, you can enjoy your knitting.



■ EMMY GRANDE (BIJOU)

- 1 Ball=approx. 110m ● Cotton 97%, Polyester 3%
- Needle(JPN) Lace:0~Crochet: 2/0
- Min. Order Q'ty: 1 box=3 balls

"BIJOU" series helps their elegancies with cool silver and gold lame.



■ EMMY GRANDE (Lame)

- 1 Ball=approx. 106m ● Cotton 96%, Polyester 4%
- Needle(JPN) Lace:0~Crochet: 2/0
- Min. Order Q'ty: 1 box=3 balls



■ EMMY GRANDE (Kasuri-shaded, Mixed)

- 1 Ball=approx. 109m ● Cotton 100%
- Needle(JPN) Lace:0~Crochet: 2/0
- Min. Order Q'ty: 1 box=3 balls



Emmy Grande Promotional project on sale

23-7 Pullover with patchwork styled patterns

Emmy Grande 50g/ball (796) 275g (6 Balls)

Design: Hitomi Shida

Needle(JP):2/0 Crochet



23-8 Pullover with Floral motifs

Emmy Grande 50g/ball (783) 280g (6 Balls)

Design: Akiko Kusajima

Needle(JP):2/0 Crochet



23-9 Cardigan with Popcorn Blade

Emmy Grande 50g/ball (485) 330g (7 Balls)

Design: Takako Mizuhara

Needle(JP):2/0 Crochet



23-10 Cardigan with watermarked borders

Emmy Grande 50g/ball (844) 285g (6 Balls)

Design: Shizue Akiyama

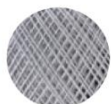
Needle(JP):2/0 Crochet, 3/0 Crochet



2023 NEW COLOR



343



481



485



584



783



794



844



811



23-11 Vest with Margaret patterns Emmy Grande 50g/ball (343) 240g(5 Balls)

Design: Kishi Mutsuko
Needle(JP):2/0 Crochet



23-12 Tunic with Cherry patterns (age:12~24months)

Emmy Grande 50g/ball (481) 86g(2 Balls)
Emmy Grande 50g/ball (111) 40g(1 Ball)

Design: Mariko Oka
Needle(JP):2/0 Crochet



23-13 PET case with Clematis motifs Emmy Grande 50g/ball (584) 37g(1 Ball)

Design: Mayumi Kawai
Needle(JP):2/0 Crochet



23-14 Ecobag with Clover patterns Emmy Grande 50g/ball (811) 98g(2 Balls)

Design: Naomi Kanno
Needle(JP):2/0 Crochet





N23-2

N23-3



N23-1



<https://www.vermillon-crochet.com/>

Related Book



"Cute Lace Knitting with Emmy Grande" will be issue on 6th of Apr.

Through this book, you can find various projects from



ご注文・お問い合わせは、お取引先または下記へ

 **オリムパス製絲株式会社**

<https://olympus-thread.com>

●表示価格には税が別に加算されます。●印刷のため、色は多少現物と異なります。



ホームページ

本社 TEL 052-931-6526
東京支店 TEL 03-3862-0481

「オリムパス」とアカウント検索



Instagram



Twitter



Pinterest



Facebook



YouTube



LINE